

New Frequency for Rufforth West from March 2024: **123.815**

Essential Information for pilots flying into or departing from the York Gliding Centre at Rufforth (WEST) Airfield

IMPORTANT:

- Prior Permission is required for all aircraft intending to fly into Rufforth (West) Airfield.
- Permission will only be granted if pilots have received, read and understood the information contained in this document.
- Failure to follow these simple instructions for arrivals and departures will result in permission being denied for future visits.
- Permission can be obtained by telephoning the club between 09:00L and 16:30L on Wednesday, Saturday or Sunday on 01904 738694 or by emailing office@yorkglidingcentre.co.uk and awaiting a reply on the above days.
- Aircraft arriving from Non-Mainland UK must file a General Aviation Report (GAR).
This can be done directly at <https://www.submit-general-aviation-report.service.gov.uk>

RUFFORTH AIRFIELD: General Information

- Rufforth Airfield is an ex-RAF base located 3.9 nautical miles to the West of York Minster (cathedral) in the centre of the city. The ex-RAF airfield is now divided into two separate airfields: Rufforth West and Rufforth East.
- Rufforth West comprises runway 17/35 and the airfield to the West of this runway and is operated by York Gliding Centre. Resident aircraft include a number of touring motor gliders and tug aircraft, as well as gliders. The office is staffed on Wednesday, Saturday and Sunday. The main gliding days are also Wednesday, Saturday and Sunday but flying is possible on any day, especially in the summer months.
- Rufforth East is home to a variety of privately owned aircraft including gyrocopters, three-axis and weight-shift microlights and other light aircraft. There is no office and flying can occur at any time in daylight hours.
- To ensure separation of inbound and departing aircraft, each airfield has a distinct circuit pattern that must be adhered to at all times. Airfield information for Rufforth East is available at <https://rufforthairfieldeast.co.uk/>
- There is no ATS provider in the immediate area. London FIS North can provide a Basic Service on 125.475 MHz.

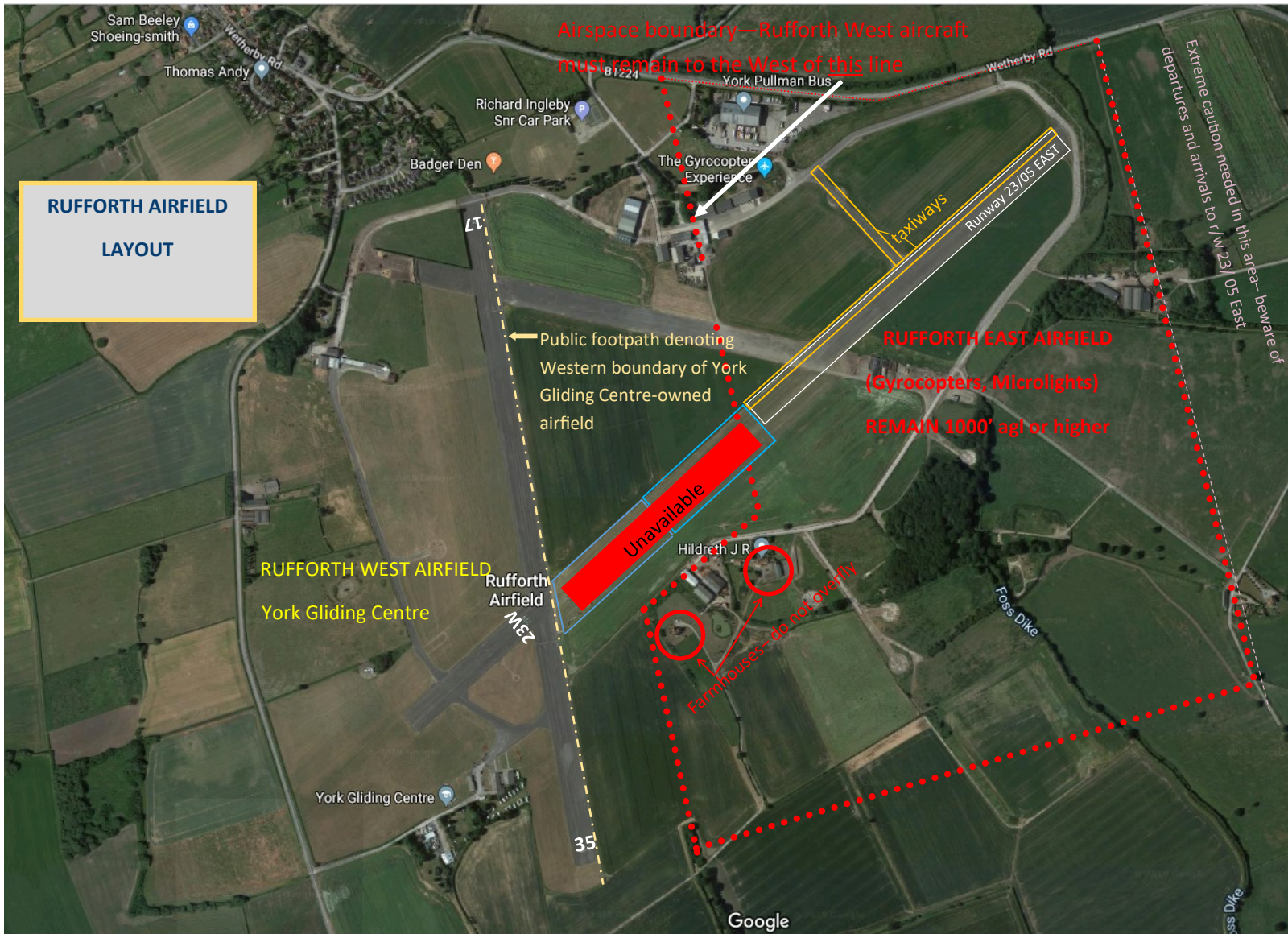
RUFFORTH WEST AIRFIELD: Important information

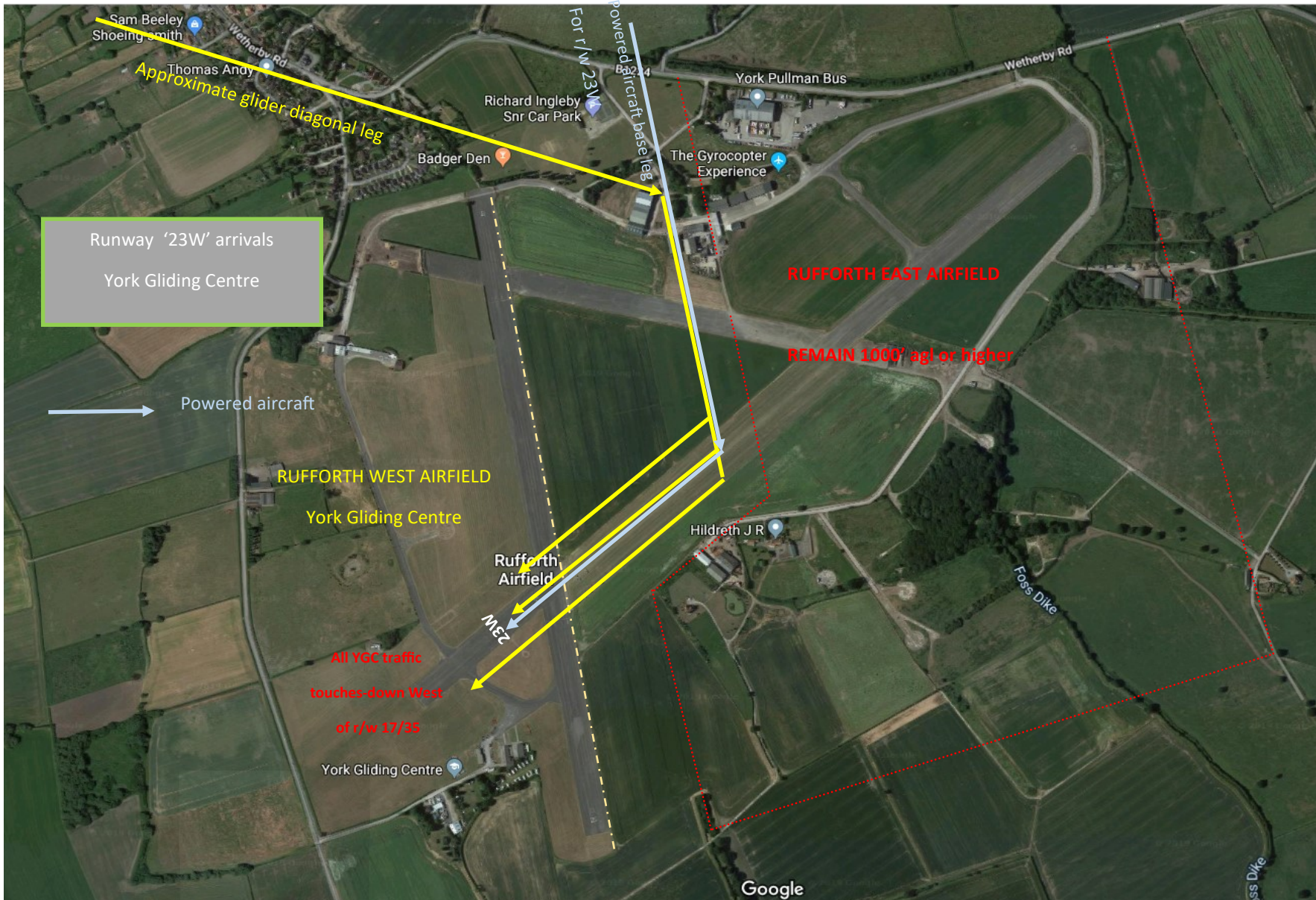
- * Runways available are 17, 35 with circuits to the West and 23 with a circuit to the North. Airfield elevation is 65ft amsl.
- * Circuits must be flown wide of the glider circuit and powered aircraft MUST give way to gliders.
- * Rufforth East airfield MUST NOT BE OVERFLOWN at less than 1000' agl.
- * Overhead joins are NOT PERMITTED. All visiting aircraft must join DOWNWIND.
- * Circuit height is 800ft agl (865ft on QNH)
- * The airfield radio frequency used is **123.815** MHz Please try to call 10 minutes before expected arrival but be aware that only handheld radios are being used and transmission range is limited. If manned, you will be told only the runway currently in use.
- * A public footpath runs down the Eastern edge of rw 17/35. Land or take off with extreme caution if pedestrians are on the footpath.
- * Local villages are not to be overflown. Study the diagrams that follow very carefully.
- * Beware of the Leeming and Topcliffe MATZ that lay to the North and of the Leeds East ATZ and RNP Instrument Approach Procedures to the South when planning approach and departure routes. Appendices A (p13) and B (p14) show the Leeds East and Sherburn RNP approach procedures overlaid on a VFR chart.
- * Park near the windsock by the clubhouse unless otherwise advised/ requested.

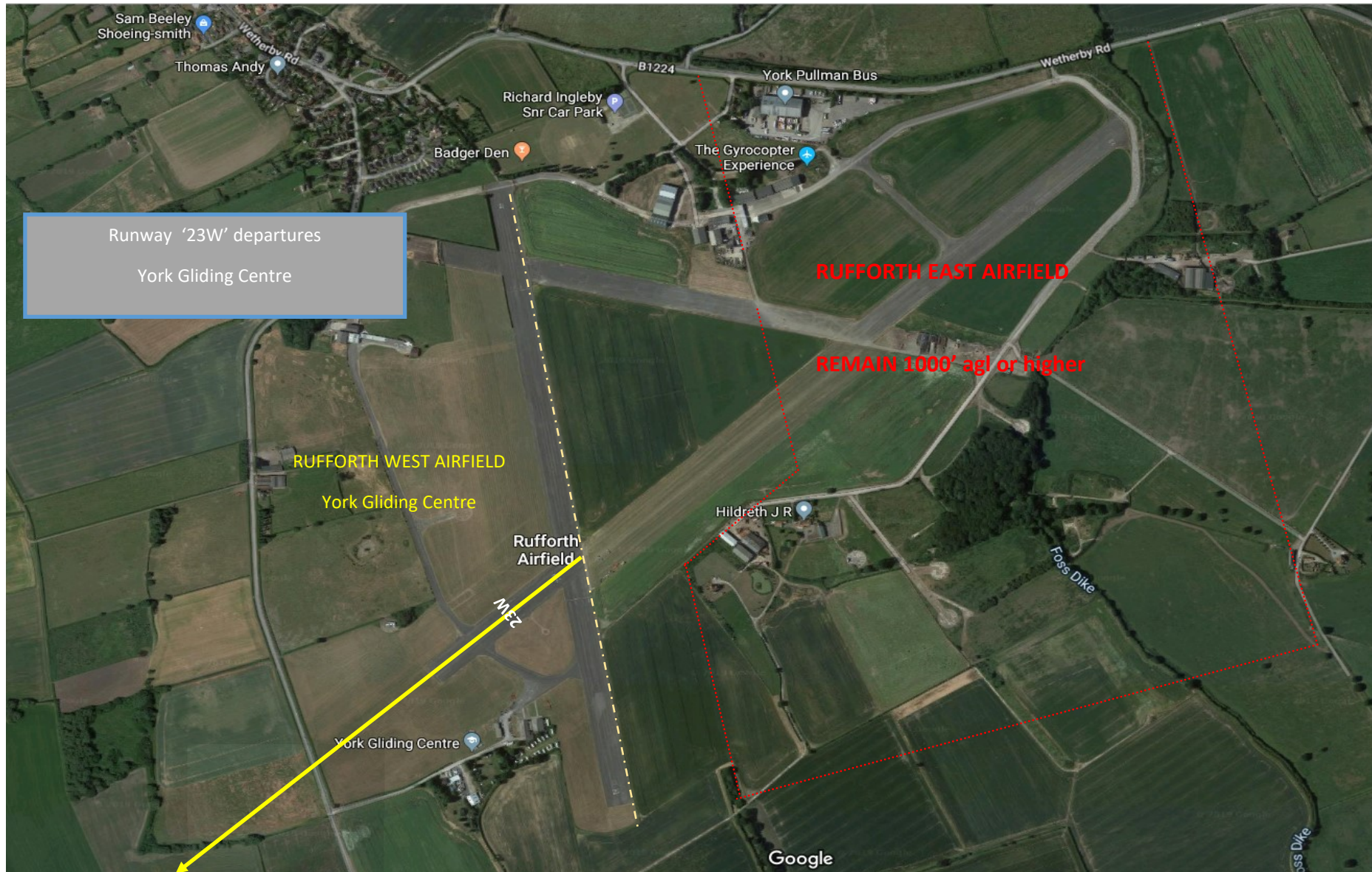
Runways available to visiting powered aircraft

Active Runway	Dimensions (m)	Surface	Lighting	Circuit
35	1200x 46	Asphalt	Nil	Left hand wide of glider circuit.
17	1200x 46	Asphalt	Nil	Right hand, wide of glider circuit and outside Rufforth village.
23W	632 x 46	358m asphalt +274m grass Note: Grass section may be unusable in winter due to waterlogging	Nil	Right hand, outside the village, final turn north-west of the red farm-house. Permission is needed from Rufforth East for a long approach. Touch down West of r/w 17/35.
05W	Not available to visiting aircraft			

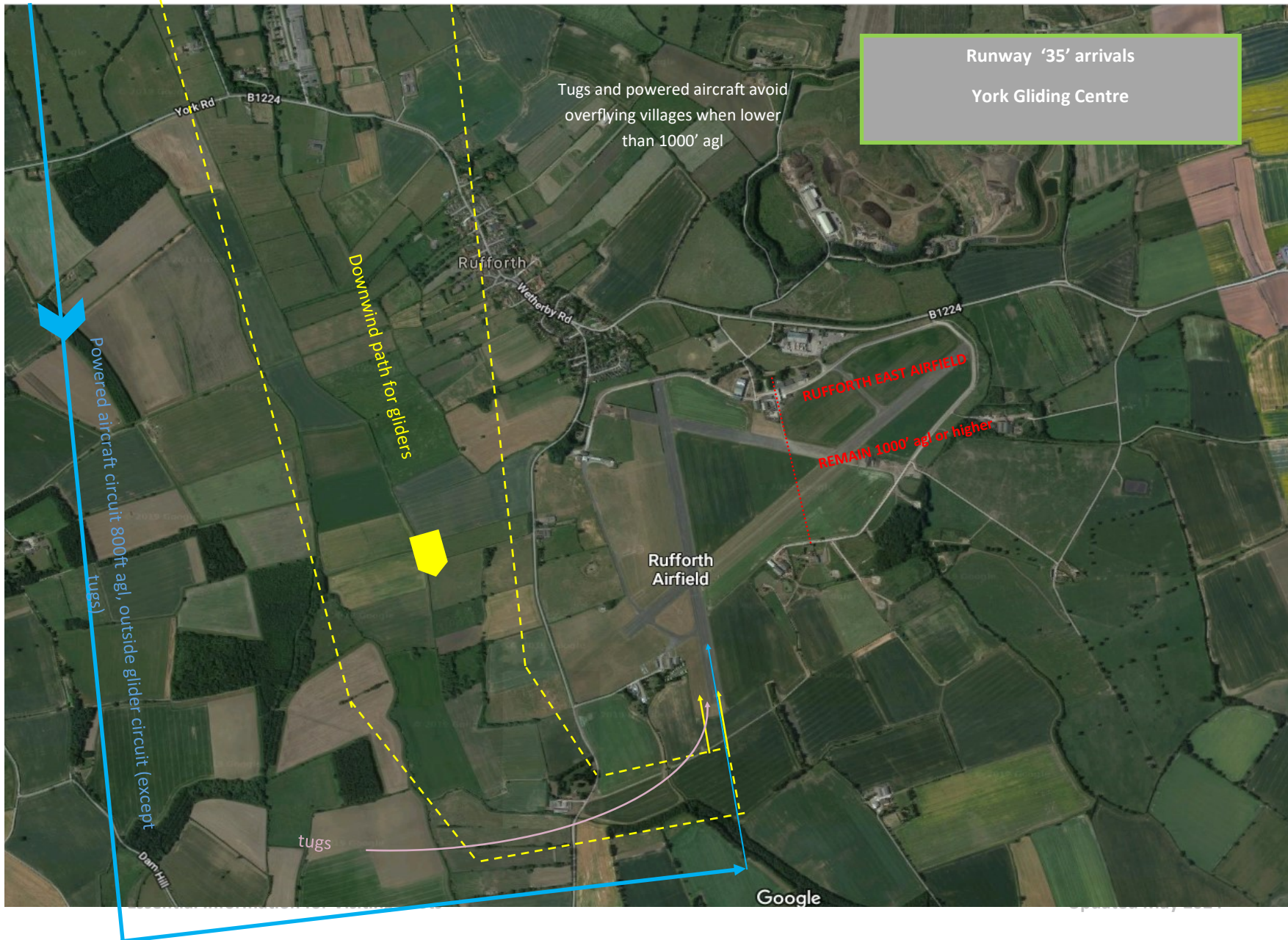
New Frequency for Rufforth West from March 2024: **123.815**

















Runway '17' arrivals
York Gliding Centre



